

# EQUITY WEEKLY REPORT

03/07/17-07/07/17



## INDIAN MARKET:

INDEX	OPEN	HIGH	LOW	CLOSE	% CHANGE
NIFTY SPOT	9594.05	9615.40	9448.75	9520.90	<b>-0.56%</b>
BANKNIFTY	23636.95	23640.10	22996.40	23211.20	<b>-1.41%</b>
INR	64.70	65.05	64.67	64.80	<b>0.03%</b>

## OTHER INDICES:

INDEX	OPEN	HIGH	LOW	CLOSE	% CHANGE
NIFTY 50	9,478.50	9,535.80	9,448.75	9,520.90	<b>0.18%</b>
NIFTY NEXT 50	26,001.95	26,290.65	25,913.65	26,254.50	<b>0.77%</b>
NIFTY 100	9,783.65	9,849.85	9,752.75	9,835.40	<b>0.27%</b>
NIFTY 200	5,117.50	5,156.15	5,100.40	5,148.50	<b>0.35%</b>
NIFTY 500	8,280.10	8,343.80	8,250.30	8,331.60	<b>0.37%</b>
NIFTY MIDCAP 50	4,488.30	4,527.25	4,467.20	4,519.75	<b>0.46%</b>
NIFTY MID100 FREE	17,555.60	17,769.05	17,474.10	17,729.75	<b>0.73%</b>
NIFTY SML100 FREE	7,275.25	7,319.40	7,221.20	7,311.05	<b>0.17%</b>
INDIA VIX	11.3825	12.1025	11.0775	11.7325	<b>3.07%</b>

## OVERALL ADVANCES/ DECLINES:

ADVANCES	DECLINES	UNCHANGED	TOTAL
<b>828</b>	<b>823</b>	<b>78</b>	<b>1729</b>

## MAJOR GLOBAL INDICES:

INDEX	OPEN	HIGH	LOW	CLOSE	% CHANGE
U.S.MARKETS					
Nasdaq (Dec 16)	6,215.49	6,216.60	6,087.81	6,144.35	<b>-1.47%</b>
EUROPEANMARKETS					
FTSE 100 (Dec 16)	7,350.32	7,377.38	7,317.51	7,370.49	<b>0.27%</b>
CAC 40 (Dec 16)	5,157.59	5,192.39	5,142.22	5,183.14	<b>0.56%</b>
DAX (Dec 16)	12,424.50	12,459.69	12,370.34	12,445.47	<b>0.24%</b>
ASIAN MARKETS					
Nikkei 225 (Dec 16)	20,025.63	20,044.01	19,946.51	20,033.43	<b>-0.93%</b>
Straits Times (Dec 16)	3,243.79	3,246.10	3,221.84	3,226.48	<b>-1.00%</b>
Hang Seng (Dec 16)	25,679.64	25,816.25	25,661.43	25,764.58	<b>-0.78%</b>
Taiwan Weighted (Dec 16)	10,367.26	10,395.07	10,329.84	10,395.07	<b>-0.26%</b>
KOSPI (Dec 16)	2,382.15	2,391.81	2,381.40	2,391.79	<b>-0.16%</b>
SET Composite (Dec 16)	1,578.19	1,580.20	1,567.16	1,574.74	<b>-0.21%</b>
Jakarta Composite (Dec 16)	5,830.98	5,831.34	5,804.60	5,829.71	<b>0.19%</b>
Shanghai Composite (Dec 16)	3,176.95	3,193.24	3,171.57	3,191.06	<b>0.09%</b>
SGX Nifty (Dec 17)	9,519.00	9,519.50	9,509.00	9,514.00	<b>-0.05%</b>

### WEEKLY GAINERS:

COMPANY	CURRENT (RS)	PREV. CLOSE (RS)	CHANGE (RS)	CHANGE (%)
VEDL	249.05	234.25	14.80	6.32%
TATASTEEL	545.75	515.00	30.75	5.97%
POWERGRID	210.55	202.30	8.25	4.08%
ITC	323.65	311.30	12.35	3.97%
BHARTIARTL	379.70	366.20	13.50	3.69%

### WEEKLY LOSERS:

COMPANY	CURRENT (RS)	PREV.C LOSE(RS)	CHANGE (RS)	CHANGE (%)
SBIN	273.65	294.5	-20.85	-7.08%
TATAMTRDVR	263.3	282.1	-18.8	-6.66%
ASIANPAINT	1102.95	1162.55	-59.6	-5.13%
ACC	1568.05	1651	-82.95	-5.02%
TATAMOTORS	432.55	452.7	-20.15	-4.45%

### NIFTY VOLUME TOPPERS:

COMPANY	VALUE (RS IN LAKHS)	NO.OFSHARES ('000s)
TATAMOTORS	380777	84100
BANKBARODA	3908.46	2415.14
DLF	3503.97	1824.38
ONGC	2366.49	1495.33
HINDALCO	2101.89	1110.87

### WEEKLY PIVOT:

SCRIPTS	R4	R3	R2	R1	P	S1	S2	S3	S4
NIFTY	10300.9	10038.5	9776.1	9685.6	9513.6	9423.1	9251.2	8988.7	8726.3
BANKNIFTY	25895.7	24957.2	24018.7	23690.4	22080.1	22751.9	22141.6	21203.9	20264.5

### SUPPORT & RESISTANCE:

SCRIPTS	R2	R1	S1	S2
NIFTY SPOT	9620	9580	9440	9370
BANKNIFTY SPOT	23880	23500	22980	22456

### TREND & STRATEGY:

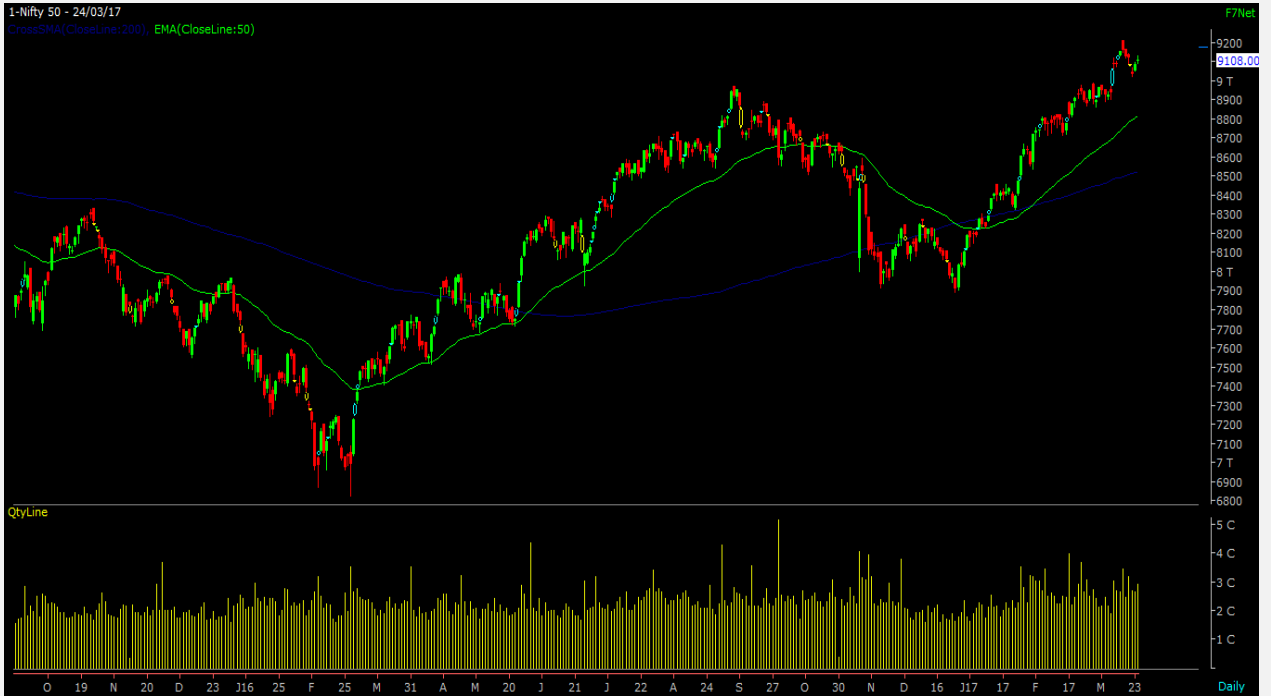
SCRIPTS	TREND	STRATEGY
NIFTY	BULLISH	BUY ON DIPS
BANKNIFTY	BULLISH	BUY ON DIPS

### WEEKLY STOCKS TO WATCH:

SCRIPTS	STRATEGY	LEVEL	TARGET	STOP LOSS
HEG	BUY	370	385	355
AVANTIFEED	BUY	1500	1550	1450
APOLLOHOSP	BUY	1275	1320	1240
SUNDRMFAST	BUY	430	445	415
SHILPAMED	BUY	655	680	630

# CHART ANALYSIS

## NIFTYSPOT:-



## BANKNIFTYFUTURE:-



# DISCLAIMER

The information and views in this report, our website & all the service we provide are believed to be reliable, but we do not accept any responsibility (or liability) for errors of fact or opinion. Users have the right to choose the product/s that suits them the most. Investment in Stocks has its own risks. Sincere efforts have been made to present the right investment perspective. The information contained herein is based on analysis and up on sources that we consider reliable. We, however, do not vouch for the accuracy or the completeness thereof. This material is for personal information and we are not responsible for any loss incurred based upon it & takes no responsibility whatsoever for any financial profit s or loss which may arise from the recommendations above. The stock price projections shown are not necessarily indicative of future price performance. The information herein, together with all estimates and forecasts, can change without notice. Ripples advisory pvt ltd. does not purport to be an invitation or an offer to buy or sell any financial instrument. Analyst or any person related to Ripples Advisory pvt. Ltd. might be holding positions in the stocks recommended. It is understood that anyone who is browsing through the site has done so at his free will and does not read any views expressed as a recommendation for which either the site or its owners or anyone can be held responsible for. Any surfing and reading of the information is the acceptance of this disclaimer

Our Clients (Paid or Unpaid), any third party or anyone else have no rights to forward or share our calls or SMS or Report or Any Information Provided by us to/with anyone which is received directly or indirectly by them. If found so then Serious Legal Actions can be taken. Any surfing and reading of the information is the acceptance of this disclaimer.